

# SCHEDULE "A"

## PROPOSED SUBDIVISION

RUSSELL McMANN BUILDERS GROUP

Rem. LOT 1, SECTION 13, RANGES 5 AND 6, MOUNTAIN DISTRICT, PLAN 28073

ADDRESS : 2555 EAST WELLINGTON ROAD, NANAIMO, B.C.

PROJECT SURVEYOR : D.W. HOLME

DRAWN BY : DAW DATE : NOV. 16/22

OUR FILE : 90313 REVISION :



1A - 3411 SHENTON ROAD, NANAIMO, B.C. V9T 2H1  
 TEL: 250 - 758 - 4631 FAX: 250 - 758 - 4660  
 E-MAIL : nanaimo@jeanderson.com  
 NANAIMO - VICTORIA - PARKSVILLE - CAMPBELL RIVER

### LEGEND

ALL DIMENSIONS ARE IN METRES

SUBJECT TO CHARGES SHOWN ON TITLE NO. ET21008 (P.I.D. 002-278-171)

DIMENSIONS ARE DERIVED FROM LAND TITLE OFFICE RECORDS

THIS PLAN HAS BEEN PREPARED IN ACCORDANCE WITH THE PROFESSIONAL REFERENCE MANUAL

**CITY OF NANAIMO PRELIMINARY LAYOUT ACCEPTANCE**

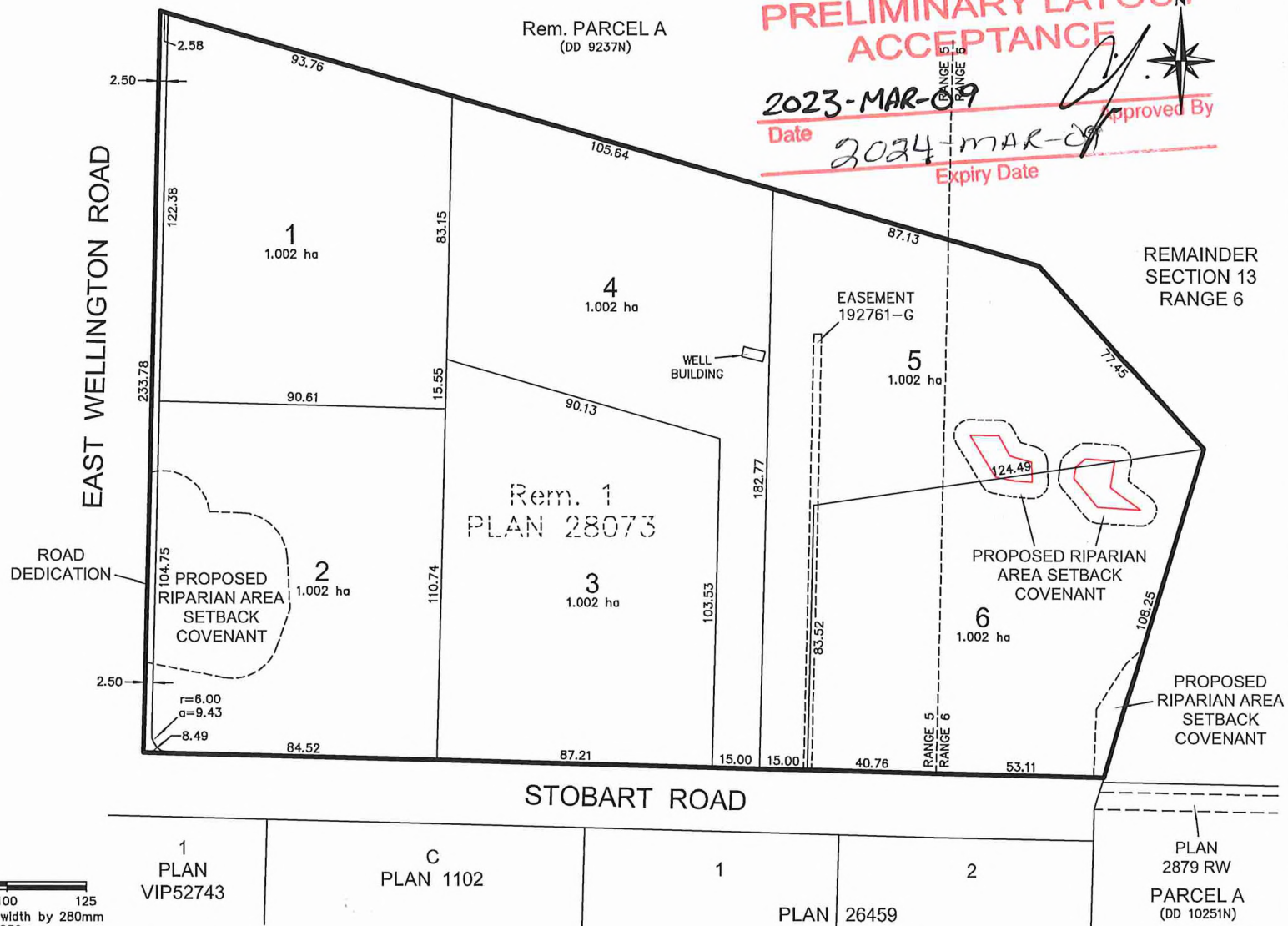
2023-MAR-09

Date

2024-MAR-09

Expiry Date

Approved By



The intended plot size of this plan is 432mm in width by 280mm in height (B size) when plotted at a scale of 1:1250.